

**Great  
Place  
To  
Work®**

**Certified**  
SEP 2018–SEP 2019  
USA



**Valley Water**

Clean Water • Healthy Environment • Flood Protection

# NOW HIRING

## Associate Engineer

**\$128,419.20-\$164,424.00**

**Health Insurance: 85% of medical premiums covered**

**Dental: 100% of premium covered**

**Vision: 100% of premium covered**

**Pension: CalPERS**

*To protect our most valuable assets, our employees, as well as the communities we serve, Valley Water requires all new hired Valley Water personnel to be fully vaccinated (for COVID -19) or to be formally excused from the requirement through the reasonable accommodation process (for details, see job posting).*

**Do you want to take part in a project that  
will have everlasting impacts on the State  
of California?**

### VALLEY WATER

Valley Water manages an integrated water resources system that includes the supply of clean, safe water, flood protection and stewardship of streams on behalf of Santa Clara County's 2 million residents.

### THE POSITION

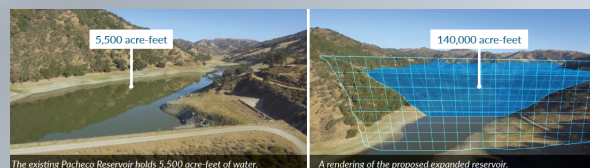
The Associate Engineer (Civil) position is an important piece of the Valley Water's Pacheco Reservoir Expansion Project which includes expanding the existing Pacheco Reservoir with new construction of a dam upstream of the existing dam, a spillway structure, inlet/outlet works, pipelines, a pump station, roads, power supply, and associated improvements. The candidate will be in charge of providing technical oversight and review of deliverables such as plans, specifications, and technical memorandums; organizing field investigations; overseeing consultant work activities; coordinating with other agencies/organizations; and communicating across technical groups with Valley Water staff and consultants. Engineering support during construction as a PE subject matter expert will include the following tasks: completing submittal reviews; responding to requests for information; and interpreting project drawings, specifications, and contract documents.

### THE IDEAL CANDIDATE

The Ideal candidate will have at least four (4) years of professional engineering experience. The specific experience will be in water infrastructure projects; construction, geotechnical, and design. The candidate will need to demonstrate the ability to manage projects from inception to completion while providing leadership and direction to technical and construction staff.

In addition to the technical aspects of the position, the ideal candidate will have strong written and verbal communication skills as he/she will be crucial in keeping all respective parties abreast of progression of project phase.

To learn more about the Pacheco Reservoir Expansion Project, click on the image below:



The existing Pacheco Reservoir holds 5,500 acre-feet of water.

A rendering of the proposed expanded reservoir.



## EXPERIENCE & QUALIFICATIONS

The following combination represents the minimum training and experience requirements:

Graduation from an accredited four-year college or university with major coursework in engineering.

OR

Possession of a valid California Engineer-in-Training (EIT) Certificate with two (2) years of associated paraprofessional engineering experience.

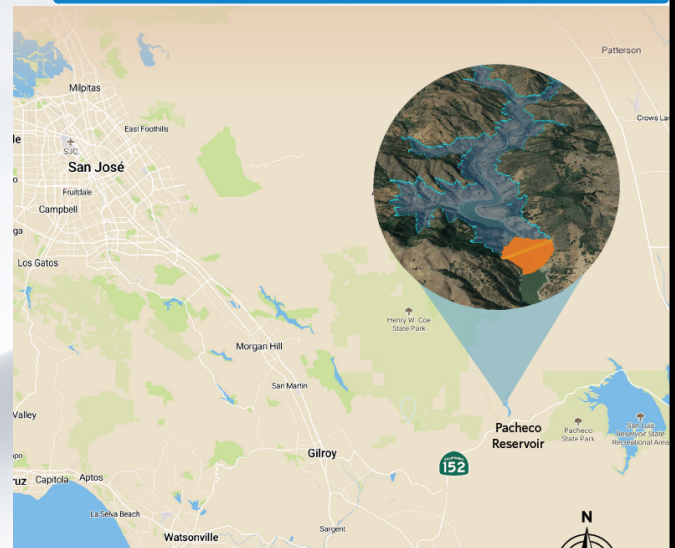
Four (4) years of professional engineering experience.

### Required Licenses

Possession of, or ability to obtain, an appropriate, valid California driver's license. Individuals who do not meet the driver's license requirement due to a disability will be considered for a reasonable accommodation on a case-by-case basis. Selected candidate will be required to successfully pass a medical examination.

\*Please note, PE is not required at time of hire; however, the candidate may obtain the PE by the first year of employment.

To review the Classification Specification, please click [here](#).



## COMPENSATION & BENEFITS

**Yearly Salary Range:**

**\$128,419.20-\$164,424.00.**

*Appointment will be made within this range depending upon qualifications.*

Valley Water not only offers competitive salaries and work life balance, but also a rich benefit plan which includes: 85% of your healthcare premium paid, total premiums paid for both vision and dental care, vacation, holidays, and sick leave, EAP, life and disability insurance. Valley Water participates in the California Public Employees' Retirement System (PERS). To view a summary of benefits, click [here](#).

## APPLICATION AND SELECTION PROCESS

To be considered for this exceptional career opportunity, complete an application through Valley Water Jobs Page by clicking [here](#).

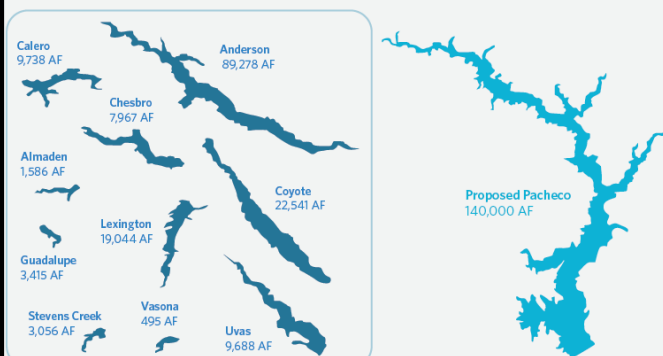
The deadline to apply for this position is **October 29, 2021 at 5pm.**

Valley Water's Equal Opportunity Non-Discrimination Policy is available for review upon request.

Valley Water will make reasonable efforts in the examination process to accommodate persons with disabilities. Please advise Human Resources in advance of any special needs by calling 1-408-630-2260.

Please be aware that once submitted all application materials become the property of Valley Water and will not be returned. Human Resources staff is not authorized to make copies of application materials for applicants.

An expanded Pacheco Reservoir will nearly equal the capacity of Valley Water's ten other reservoirs combined.



One acre-foot is 325,851 gallons of water, which is enough to serve the needs of ten people for one year.